



Peter Diamandis, MD

Founder & Chairman of the XPRIZE Foundation

By the end of the decade there will be two kinds of companies:

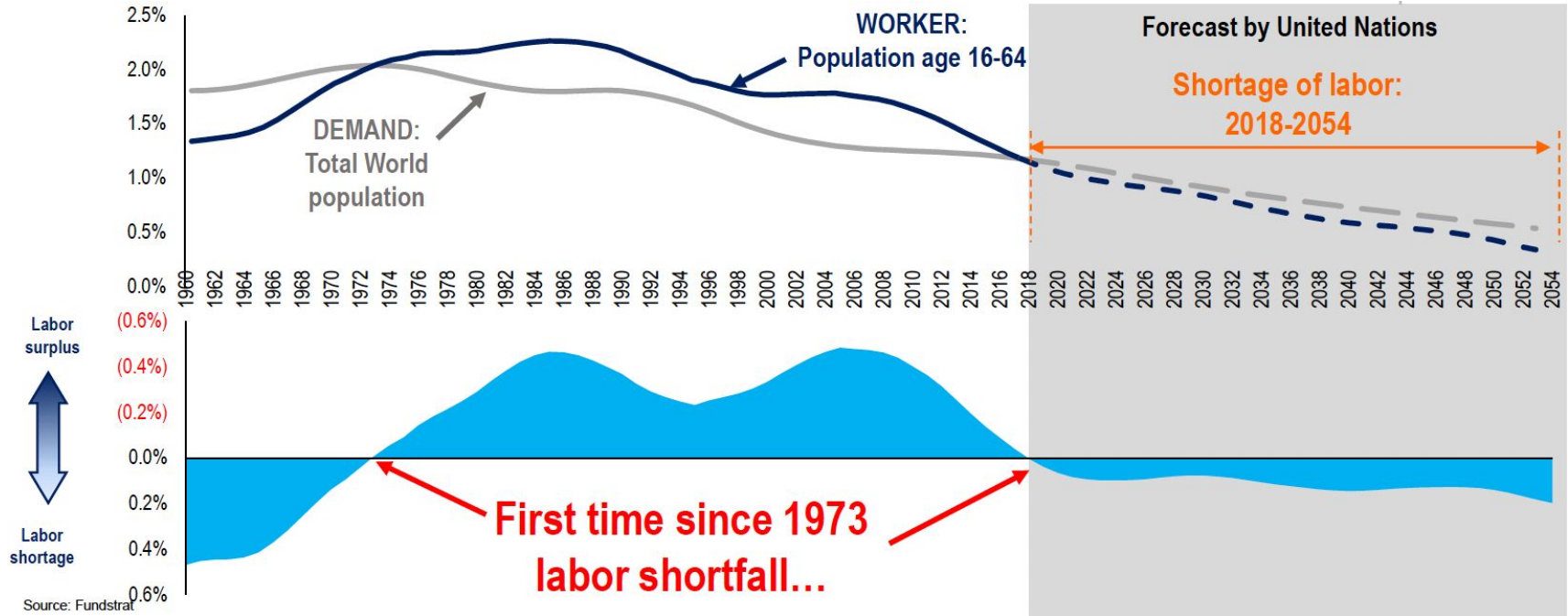
1. Those who fully utilize AI; and
2. Those who are out of business

The Global Labor Excess is Gone

There's more work to do than skilled labor to fill the gap

Figure: Spread between total population growth and workforce growth (age 16-64)

Per UN DESA

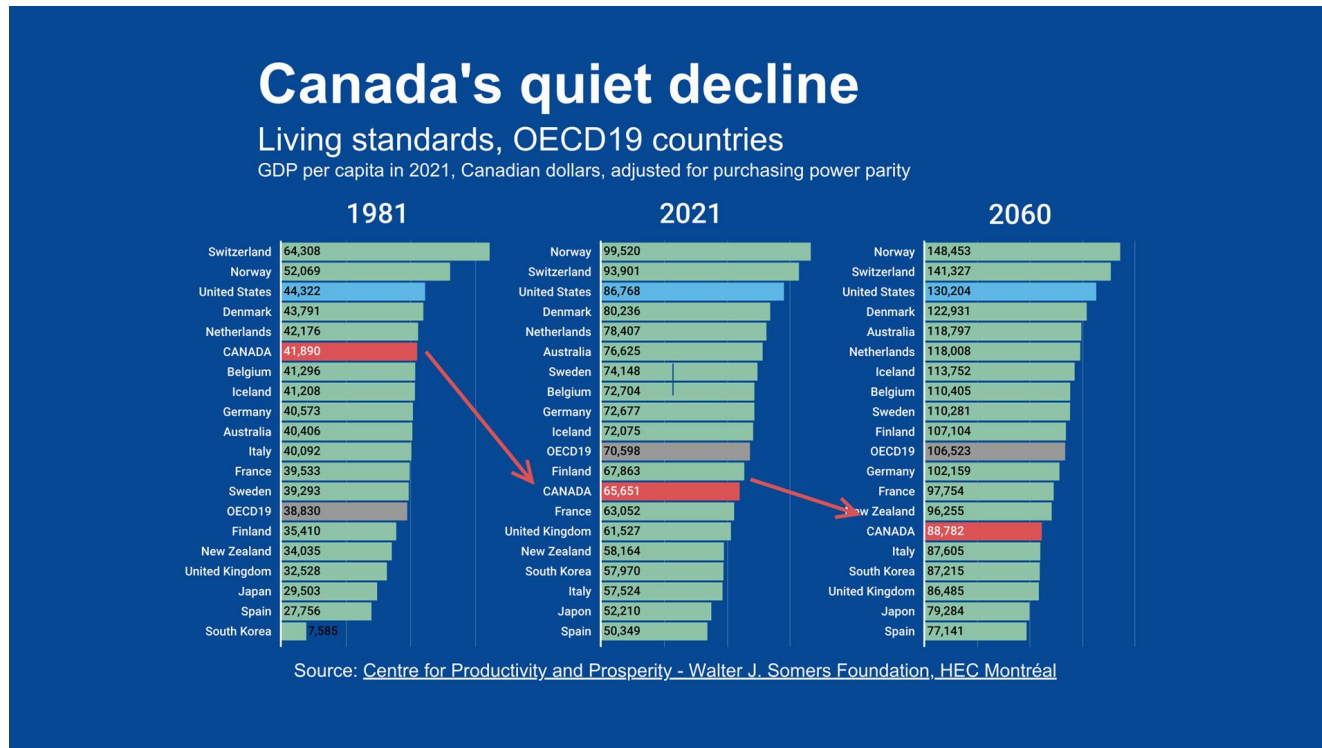


Source: Fundstrat

Source: Fundstrat, Bloomberg

Canada's Productivity Decline

A falling standard of living for Canadians

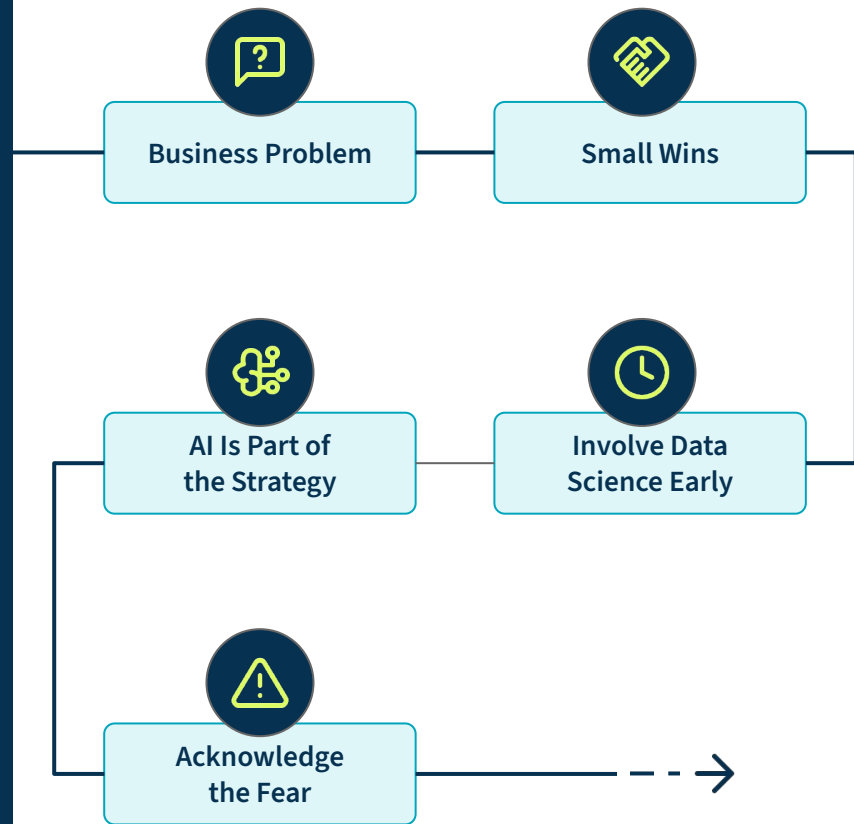


Operationalizing AI is Hard...

According to a recent McKinsey Global Survey*,
only 36% of AI use cases are operationalized.

* Source: [Operationalizing machine learning in process - McKinsey & Company](#)

Key Learnings in the Adoption of AI



Government of Alberta (GoA)

Wildfire Resource Scheduling



Opportunity

- Optimizing expenses
- Scheduling efficiency



AI/ML Solution

- Machine learning

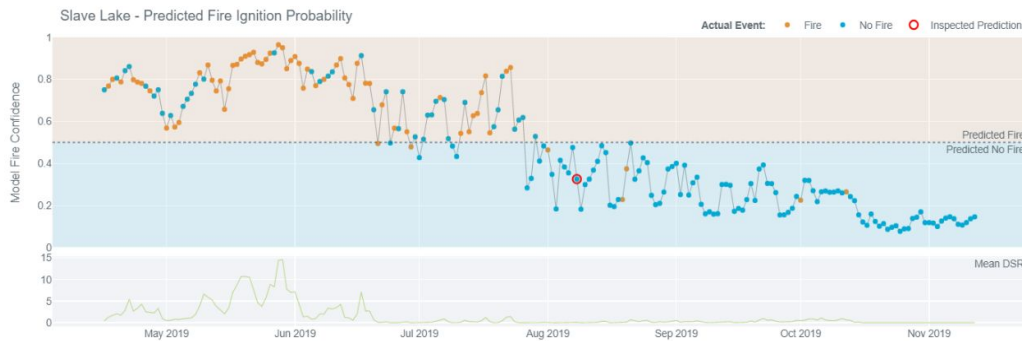


Impact

- \$2-\$5M in equipment operation costs and crew overtime expenses
- Improved fire safety

Forecasting Tool to Enable Schedule Efficiency and Optimize Expenses

Model Evaluation



Inspect Individual Prediction



Large Energy Company

Project Controls



Opportunity

- Improved capital efficiency



AI/ML Solution

- OCR + LLM + Semantic Search



Impact

- Reducing material contingency reserves by 1% unlocks over \$25M in capital

Using ML to Reduce Material Costs

Logo

Advanced Search +

Total search result: 458

☐ Instock

☐ Group Description

Refresh filter

Groups

Plastic (34)

Steel (12)

Rank

Average Price

Company/Vendor Name

Sub-Item

Co-Pro

Pipe Sleeves

Group	Avg/ Unit Cost	YRLY Avg Cost	LFT Avg Cost
<div> <div>NIPPLE, 316/316L SS A312-TP316/316L, SMLS, PE, SCH 160, B36.10M, 6"</div> <div>21.87521.87521.875</div> </div>	21.875	21.875	21.875
<div> <div> <div> <div>Description</div> <div>Company/Vendor</div> <div>CO Number</div> <div>Unit</div> <div>Co Tag Number</div> <div>Unit Price</div> <div>Revision Date</div> </div> <div> <div>Carbon Steel Pipes</div> <div>SeAH Steel America Inc.</div> <div>265-5001</div> <div>Unit</div> <div>00-00000000</div> <div>703.86</div> <div>MM/DD/YYYY</div> </div> <div> <div>Carbon Steel Pipes</div> <div>SeAH Steel America Inc.</div> <div>265-5001</div> <div>Unit</div> <div>00-00000000</div> <div>703.86</div> <div>MM/DD/YYYY</div> </div> <div> <div>Carbon Steel Pipes</div> <div>SeAH Steel America Inc.</div> <div>265-5001</div> <div>Unit</div> <div>00-00000000</div> <div>703.86</div> <div>MM/DD/YYYY</div> </div> <div> <div>Carbon Steel Pipes</div> <div>SeAH Steel America Inc.</div> <div>265-5001</div> <div>Unit</div> <div>00-00000000</div> <div>703.86</div> <div>MM/DD/YYYY</div> </div> <div> <div>Carbon Steel Pipes</div> <div>SeAH Steel America Inc.</div> <div>265-5001</div> <div>Unit</div> <div>00-00000000</div> <div>703.86</div> <div>MM/DD/YYYY</div> </div> <div> <div>Carbon Steel Pipes</div> <div>SeAH Steel America Inc.</div> <div>265-5001</div> <div>Unit</div> <div>00-00000000</div> <div>703.86</div> <div>MM/DD/YYYY</div> </div> </div> </div> <div> <div>Average Unit Cost</div> <div>0.00</div> <div>Yearly Unit Cost</div> <div>0.00</div> <div>Lifetime Unit Cost</div> <div>0.00</div> </div>	923.3125000...	923.3125000...	923.3125000...
<div> <div>NIPPLE, 316/316L SS A312-TP316/316L, SMLS, PE, SCH 160, B36.10M, 6"</div> <div>21.87521.87521.875</div> </div>	21.875	21.875	21.875
<div> <div>PIPE SLEEVE FOR PIPE, CS API 5L-X65M, PSL2, SAW, DBL BTT, STRT SM, BE, 0.625" (15.88MM) WT, B36.10M</div> <div>923.3125000...923.3125000...923.3125000...</div> </div>	923.3125000...	923.3125000...	923.3125000...
<div> <div>NIPPLE, 316/316L SS A312-TP316/316L, SMLS, PE, SCH 160, B36.10M, 6"</div> <div>21.87521.87521.875</div> </div>	21.875	21.875	21.875
<div> <div>PIPE SLEEVE FOR PIPE, CS API 5L-X65M, PSL2, SAW, DBL BTT, STRT SM, BE, 0.625" (15.88MM) WT, B36.10M</div> <div>923.3125000...923.3125000...923.3125000...</div> </div>	923.3125000...	923.3125000...	923.3125000...
<div> <div>NIPPLE, 316/316L SS A312-TP316/316L, SMLS, PE, SCH 160, B36.10M, 6"</div> <div>21.87521.87521.875</div> </div>	21.875	21.875	21.875
<div> <div>PIPE SLEEVE FOR PIPE, CS API 5L-X65M, PSL2, SAW, DBL BTT, STRT SM, BE, 0.625" (15.88MM) WT, B36.10M</div> <div>923.3125000...923.3125000...923.3125000...</div> </div>	923.3125000...	923.3125000...	923.3125000...
<div> <div>NIPPLE, 316/316L SS A312-TP316/316L, SMLS, PE, SCH 160, B36.10M, 6"</div> <div>21.87521.87521.875</div> </div>	21.875	21.875	21.875

By the Numbers

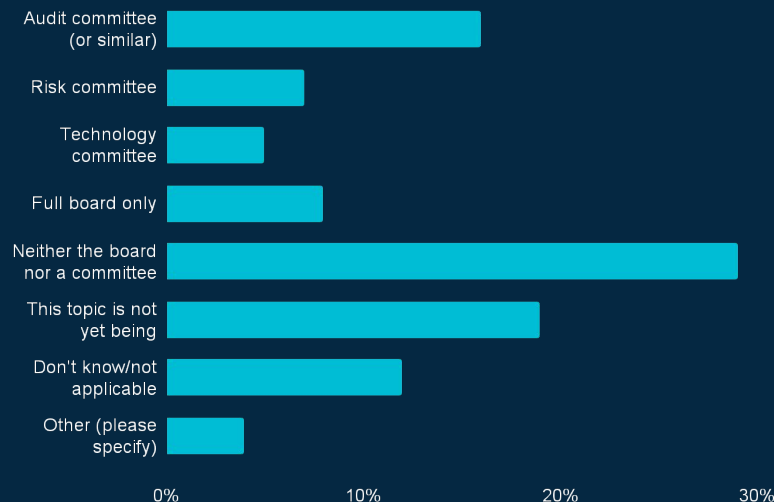
A Few Statistics

Poll of companies in the Society for Corporate Governance in the U.S.

66% of Boards have had AI on the agenda

49% of companies already have or are working on AI frameworks, policies or codes of conduct

Where does primary oversight for AI reside at the Board level:



Important Board Questions



RAI Principles



Risk Tolerance



AI Regulations



Adoption Mitigations



Ongoing Maintenance



Projected ROI